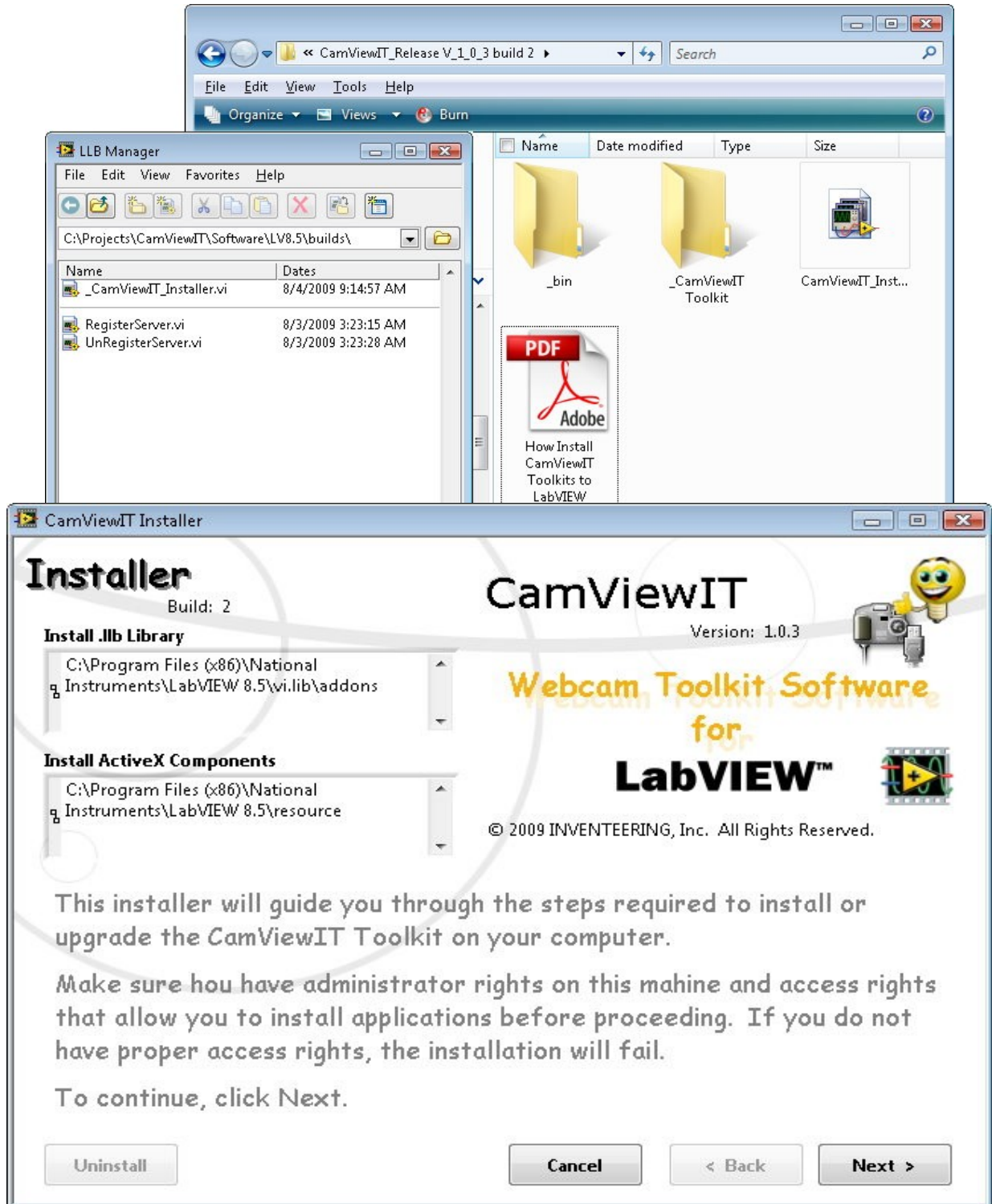


How to Install CamViewIT Toolkit

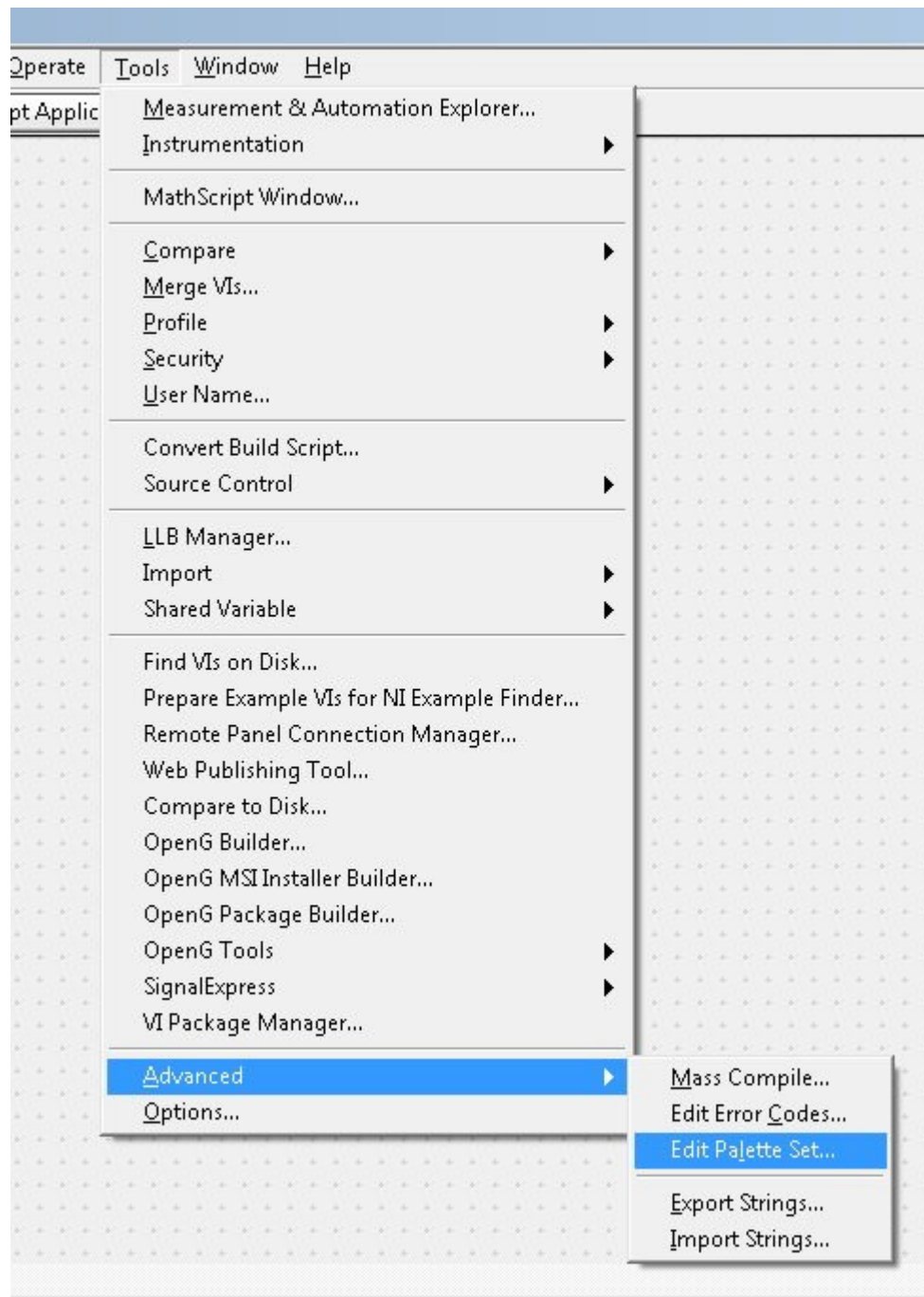
This document will walk you through the process of installing and adding a toolkit to your LabVIEW Functions and Controls Palettes. First download and Unzip the CamViewIT installer file **CamViewIT_Release V_x_x_x.zip**. Then run the **CamViewIT_Instraller.exe**



How to add toolkits to LabVIEW palettes

This document will walk you through the process of adding a toolkit to your LabVIEW Functions and Controls Palettes. After you have run the **CamViewIT Installer** you then open LabVIEW and on a blank VI window select the following menu:

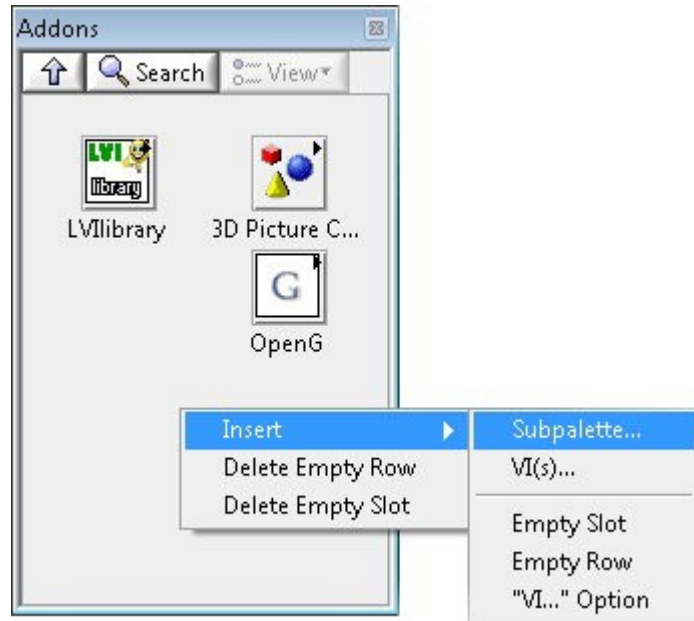
Tools>Advanced>Edit Palette Set.



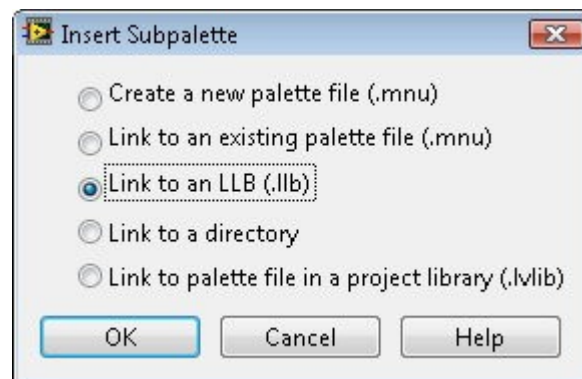
How to add toolkits to LabVIEW palettes

Now select the Addons on the **Functions Palette** and right click and select the menu:

Insert>Subpalette...



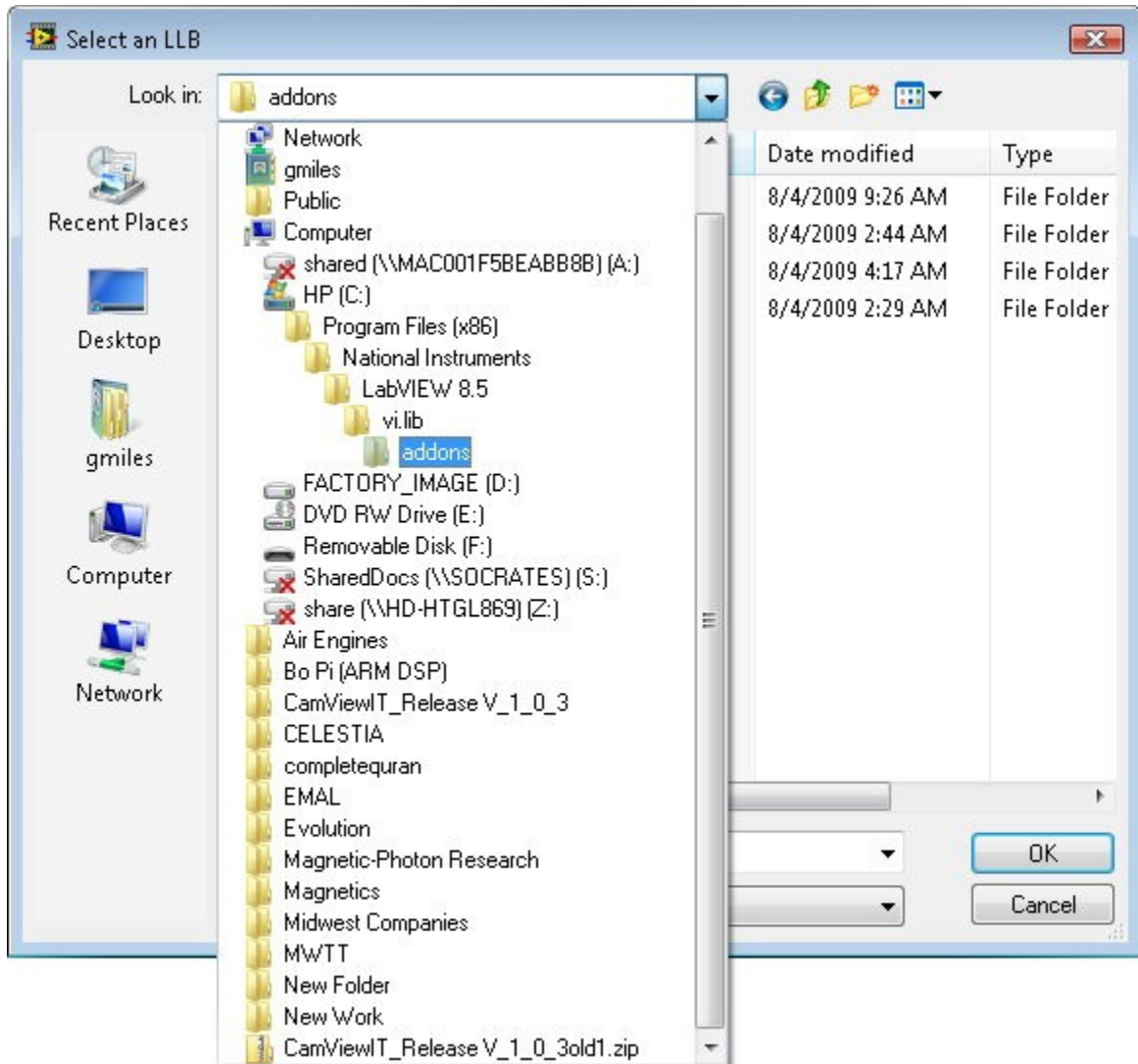
next select the **Link to an LLB (.llb)** and press OK.



How to add toolkits to LabVIEW palettes

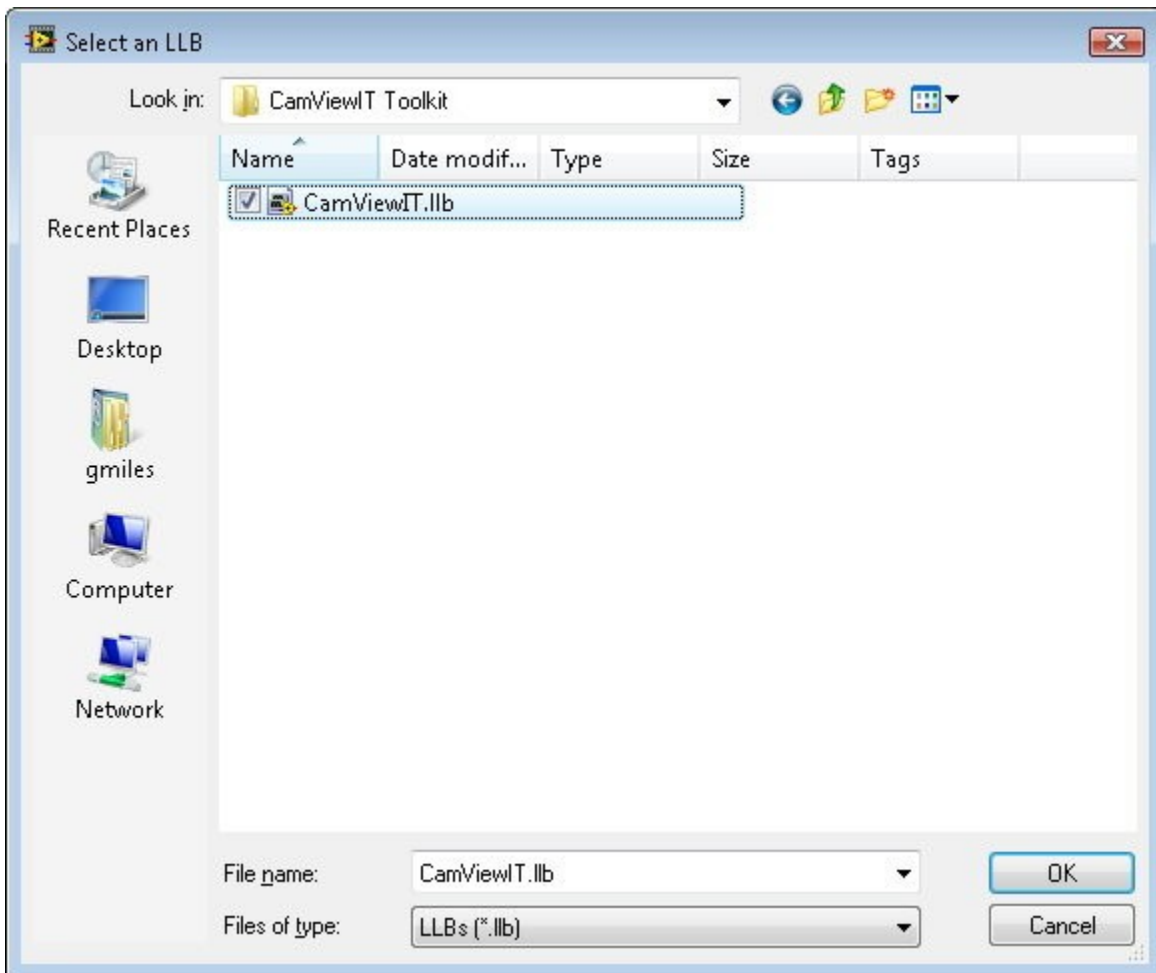
Now make sure that you are pointing to the following path:

C:\Program Files\National Instruments\LabVIEW 8.5\vi.lib\Addons



How to add toolkits to LabVIEW palettes

Now select **CamViewIT.llb**



You should now see the following Icon on the Functions Palette.

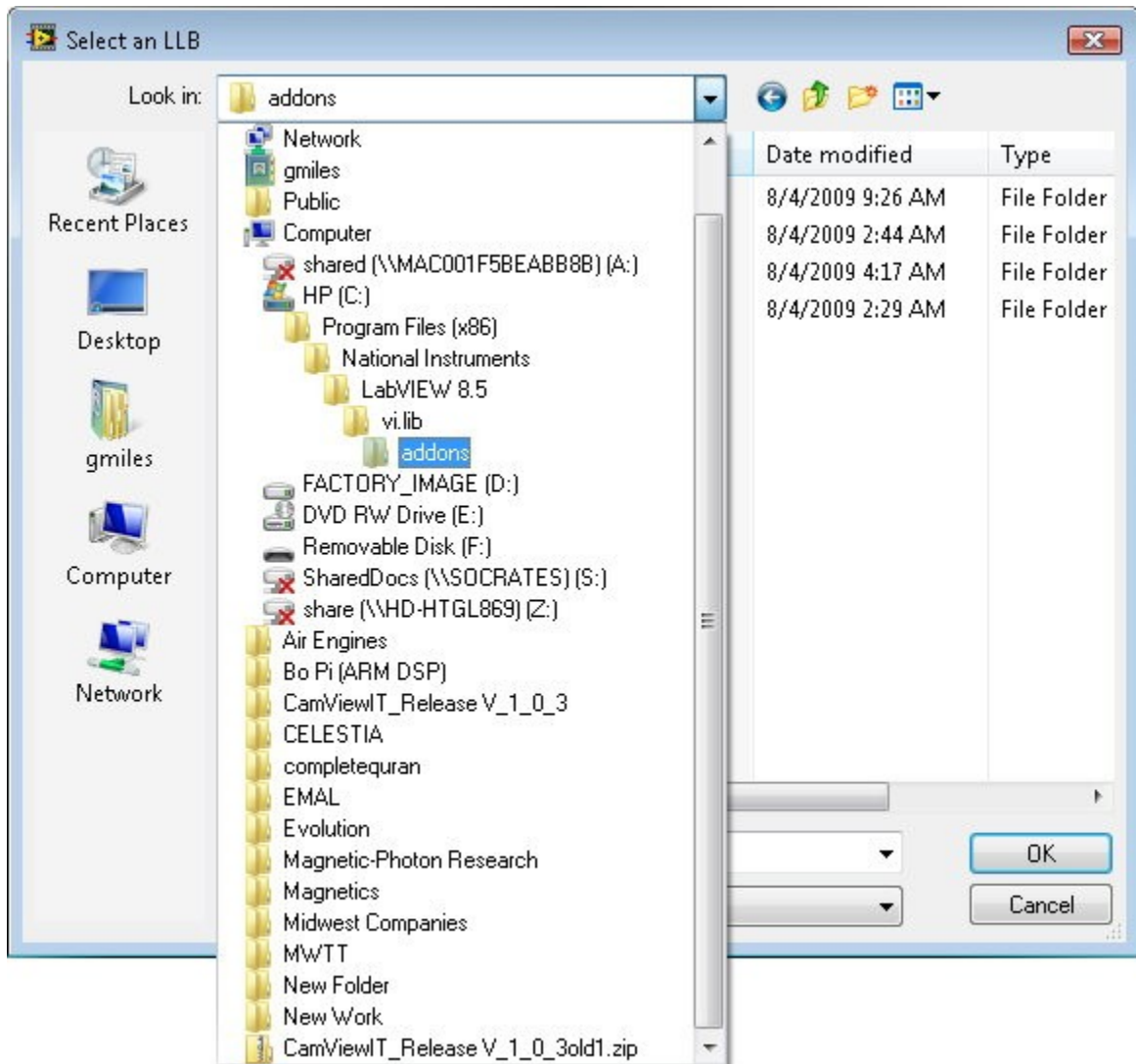


How to add toolkits to LabVIEW palettes

Now First go to the Addons Palette on the **Control Palette** and repeat this process.

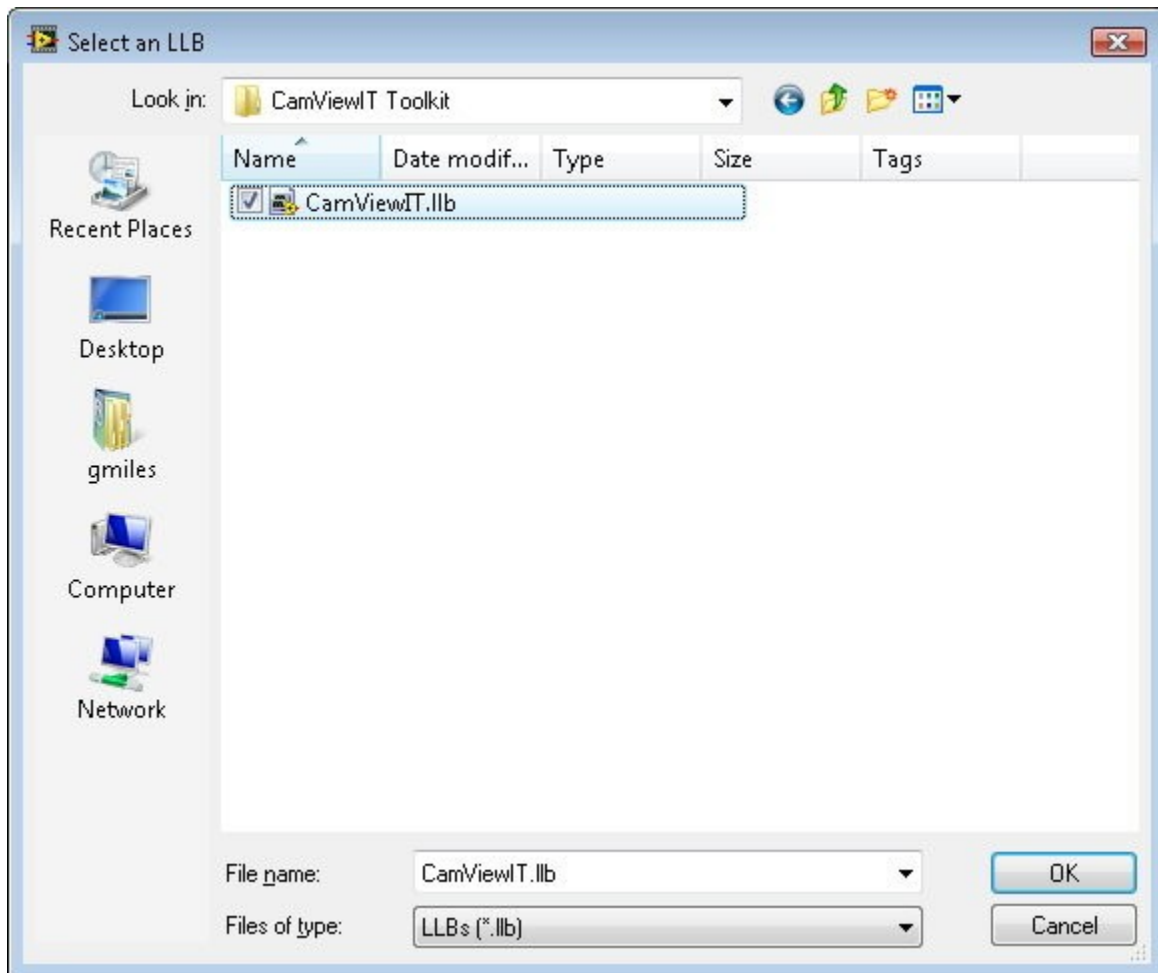
Now make sure that the you are pointing to the following path:

C:\Program Files\National Instruments\LabVIEW 8.5\vi.lib\Addons

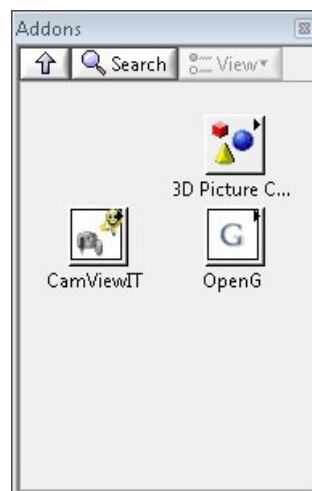


How to add toolkits to LabVIEW palettes

Now select **CamViewIT.llb**

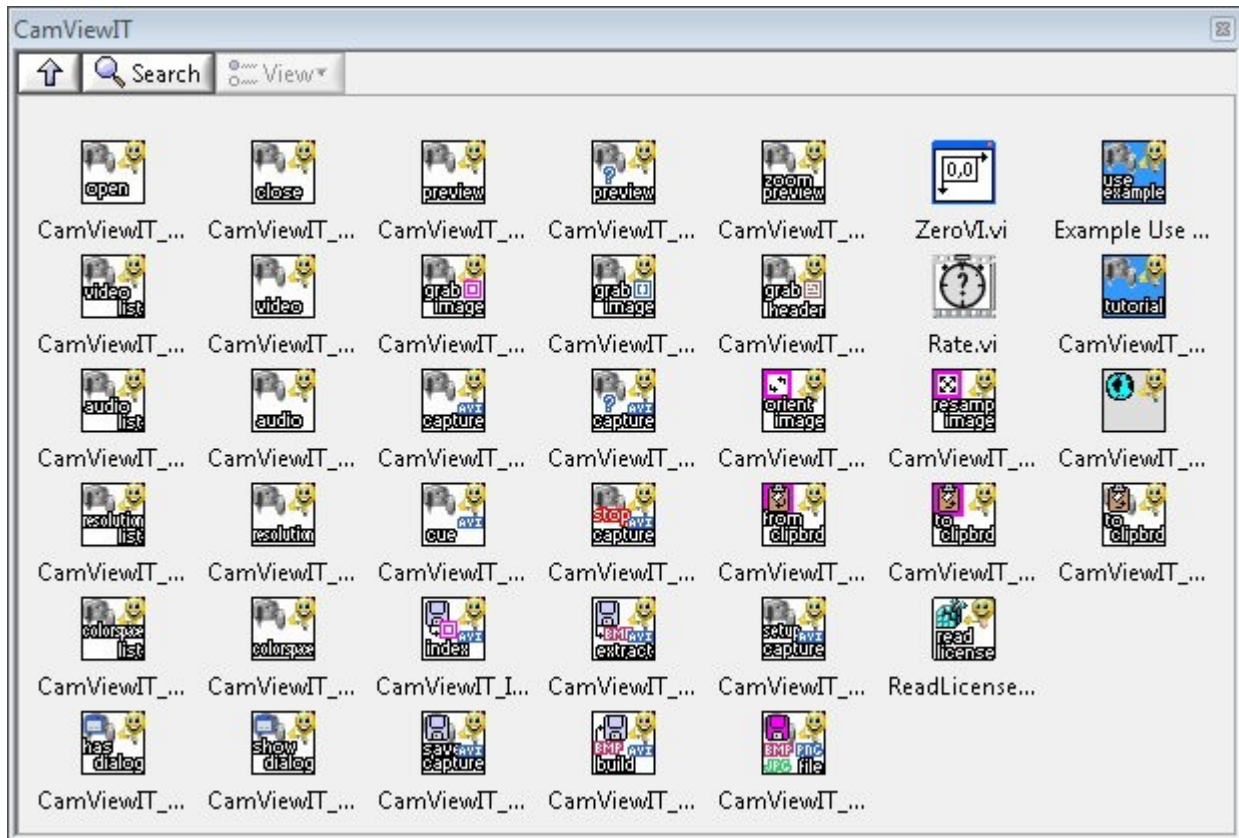


You should now see the following Icon on the Functions Palette.

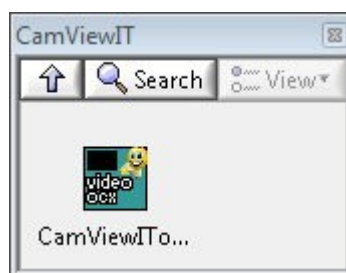


How to add toolkits to LabVIEW palettes

Now select the Functions Palette **Addons>CamViewIT Toolkit>CamViewIT**

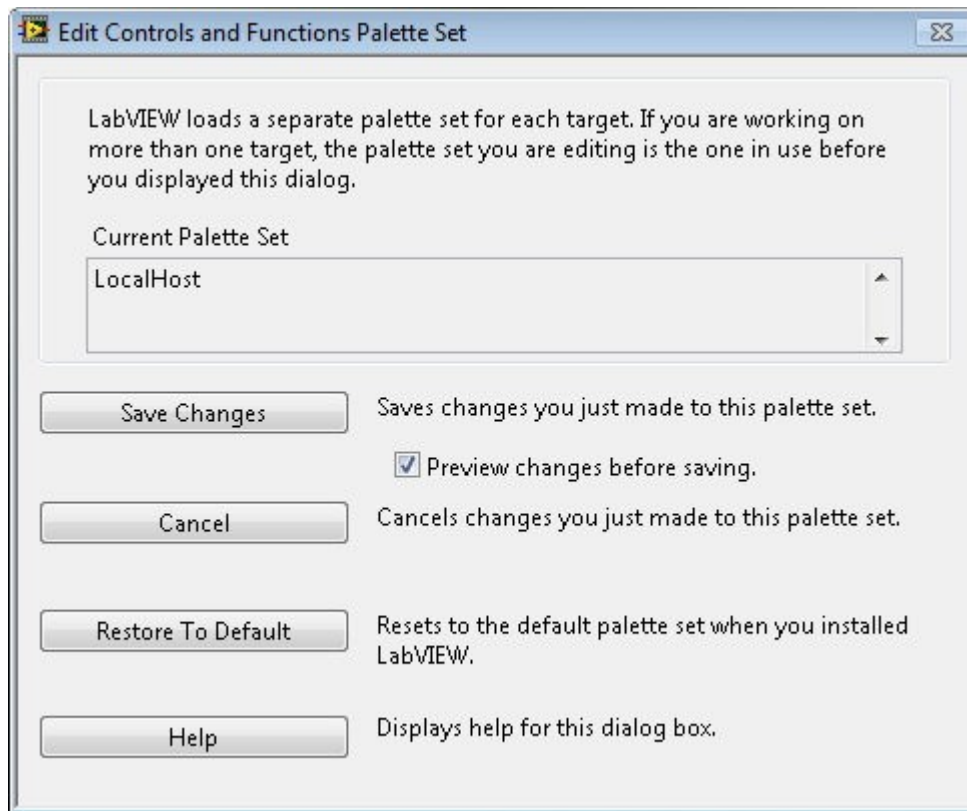


Now select the Controls Palette **Addons>CamViewIT Toolkit>CamViewIT**



How to add toolkits to LabVIEW palettes

Now select Save Changes on the Edit Controls and Functions Palette Set Window.



How to Get Started with the CamViewIT Toolkit

Now select the **Example Use of CamViewIT.vi** and now you have a working example to get you started.



Preview Frame Window

- Audio Capture Filter
- Audio Format
- Video Capture Filter
- Video Capture Pin
- Video Capture Format
- Video Capture Source

Zoom %: 100

Dialog Pop Up

Copy

CamViewIT
Version: 1.0.3
Webcam Toolkit Software
for
LabVIEW™

© 2009 INVENTEERING, Inc. All Rights Reserved.

0	×636147	×656349	×5F6059	×61625B
0	×566567	×546365	×5F6268	×5F6268
	×5E6169	×5E6169	×606676	×626878
	×5E6460	×5D635F	×5B6662	×616C68
	×576462	×586563	×676767	×6B6B6B
	×5C6262	×5E6464	×656968	×696D6C
	×636464	×656666	×606C6F	×636F72
	×64647F	×686883	×65707C	×67727E
	×62687C	×666C80	×5C7281	×5D7382
	×65726A	×647169	×587073	×5A7275
	×686F66	×656C63	×667066	×697369
	×646B62	×656C63	×646F67	×667169
	×6C6D6D	×6D6E6E	×676F73	×687074
	×6F7180	×6D6F7E	×697376	×687275
	×5E7466	×617769	×61766F	×61766F
	×5D7376	×607679	×687A74	×667872
	×5F738E	×5E728D	×65747A	×67767C
	×66778C	×65768B	×6B7878	×6B7878
	×71747C	×72757D	×6F7871	×6E7770
	×737373	×747474	×6C776F	×6C776F
	×716C76	×75707A	×6D7671	×6E7772
	×706F8D	×706F8D	×6E767C	×6F777D
	×6C7777	×6B7676	×677683	×697885

Grab Picture Window

VideoDevice: HP Webcam

AudioDevice: Microphone Array

ColorSpace: YUY2

Resolution: 320 x 240

Orient: Rotate 0

Width: 400

Height: 400

Resample

Frame Rate: 35

Zoom Factor: 1

Grab

Picture

Data

Copy

Paste

Start Capture

Error

status: code: 0

source:

Capture File: C:\CamViewIT.avi